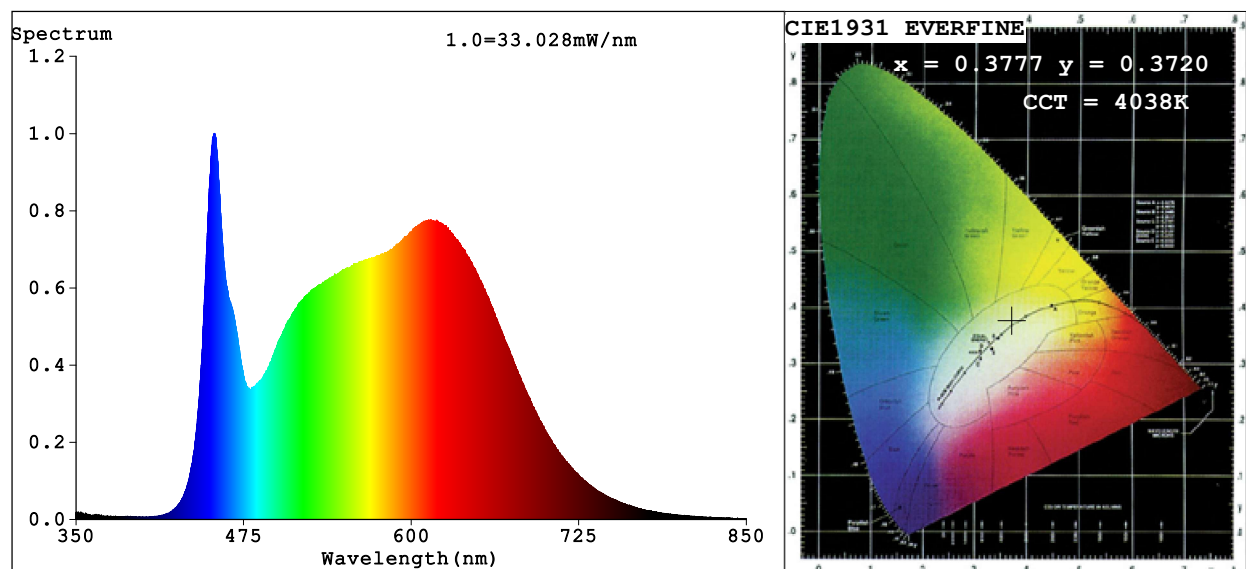


Spectrum Test Report



Color Parameters:

Chromaticity Coordinate: $x=0.3777$ $y=0.3720$ $u'=0.2252$ $v'=0.4991$

CCT=4038K (Duv=-0.0014) Dominant WL:Ld =579.8nm Purity=25.0%

Ratio:R=20.1% G=75.4% B=4.5%; Peak WL:Lp=453.2nm FWHM=24.3nm

Render Index:Ra=94.9 CRI=92.1 TM30:Rf=91 Rg=99

R1 =96 R2 =98 R3 =98 R4 =94 R5 =94 R6 =95 R7 =94

R8 =89 R9 =75 R10=94 R11=95 R12=71 R13=97 R14=98 R15=94

Photo Parameters:

Flux = 1547 lm Eff. : 53.37 lm/W Fe = 5.366 W

Electrical parameters:

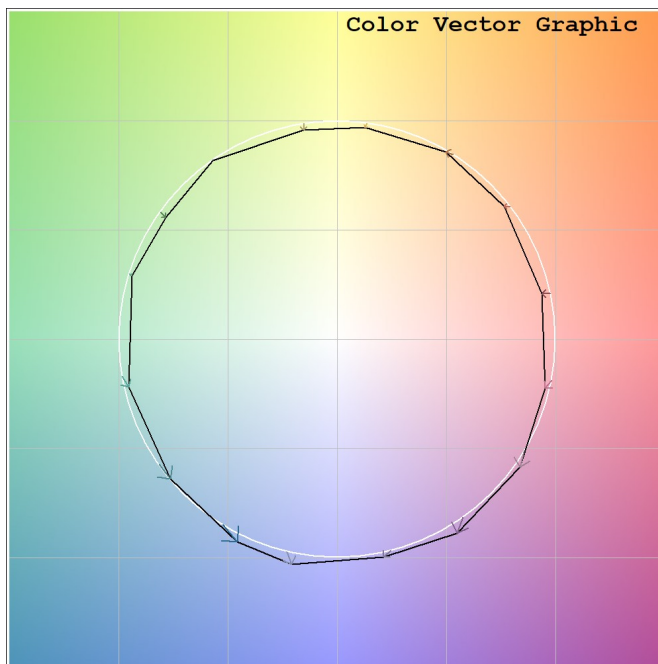
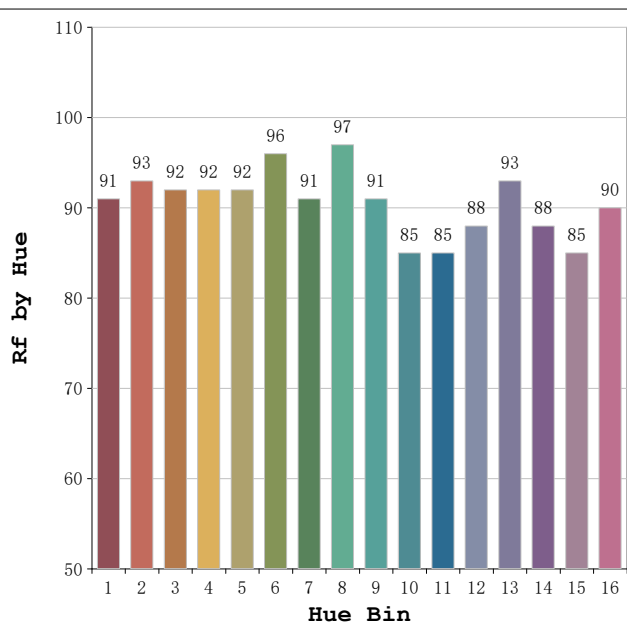
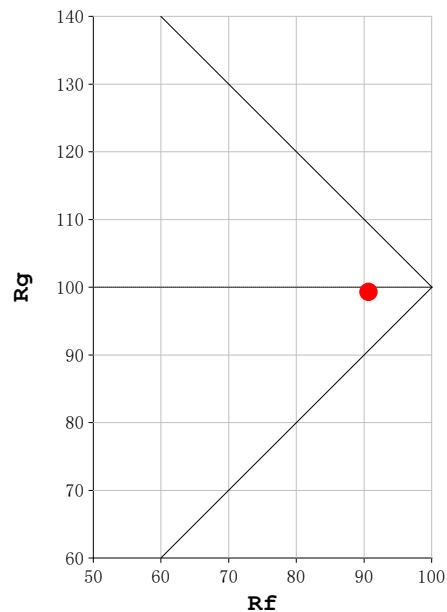
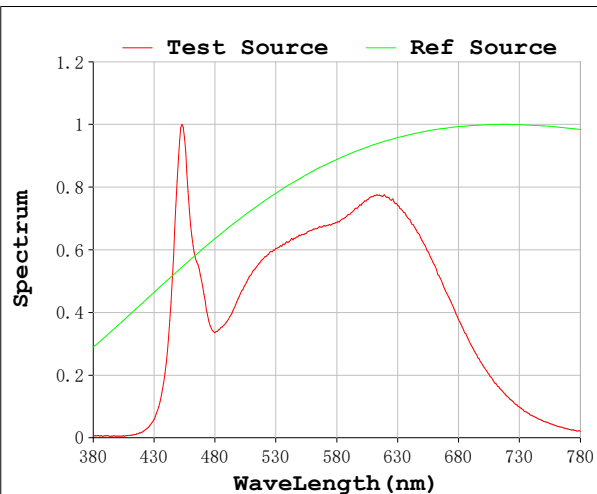
V = 230.07 V I = 0.1322 A P = 28.99 W PF = 0.9527

Status: Integral T = 888 ms Ip = 41004 (63%)

Model:Spotia Zomm CTT negro
 Tester:Sergio Carneros
 Temperature:20Deg
 Manufacturer:Luz Negra

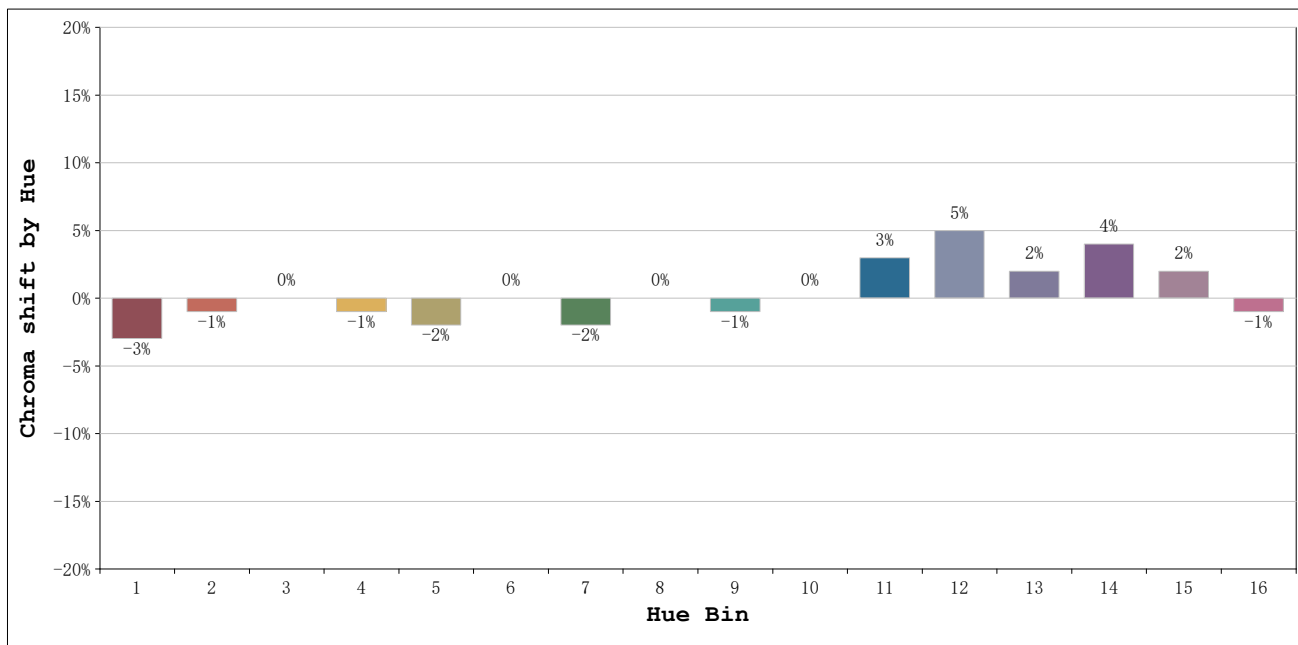
Number:4000K 20° Panal de abeja
 Date:2026-03-23 08:48:38
 Humidity:50%
 Remarks:1 unidad

Rf: 91 **CCT: 4038 K** **u': 0.2252**
Rg: 99 **Duv: -0.0014** **v': 0.4991**



Model:Spotia Zomm CTT negro
 Tester:Sergio Carneros
 Temperature:20Deg
 Manufacturer:Luz Negra

Number:4000K 20° Panal de abeja
 Date:2026-03-23 08:48:38
 Humidity:50%
 Remarks:1 unidad

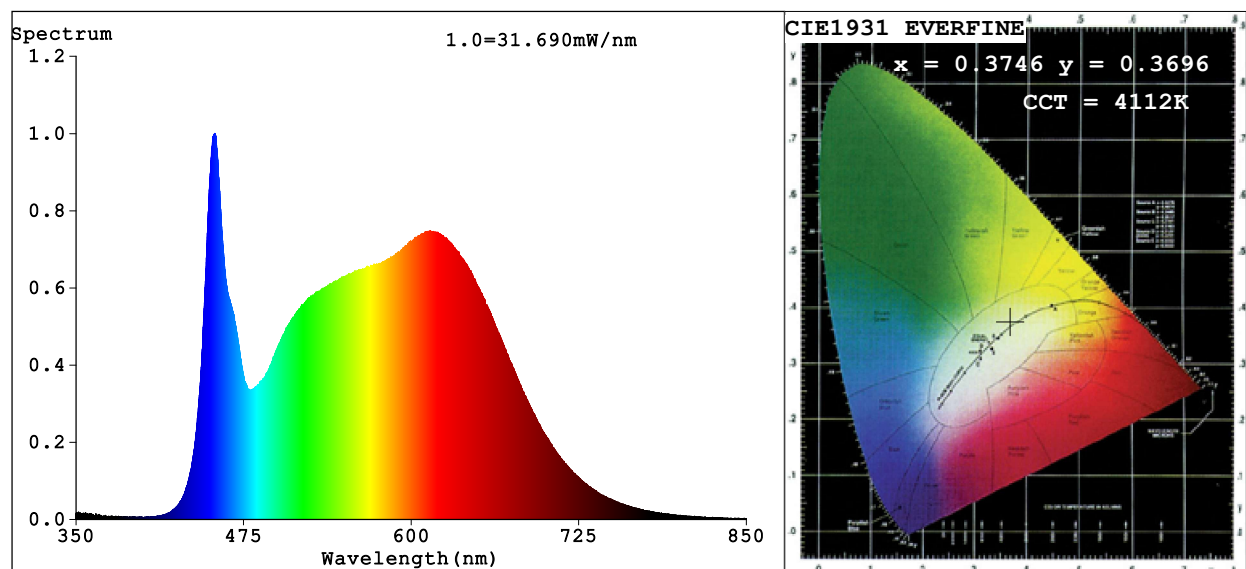


			Graphic shift(%)	
Hue Bin	Hue Angle	Rf	Chroma	Hue
1	0.0° - 22.5°	91	-3	1
2	22.5° - 45.0°	93	-1	2
3	45.0° - 67.5°	92	0	3
4	67.5° - 90.0°	92	-1	1
5	90.0° - 112.5°	92	-2	1
6	112.5° - 135.0°	96	0	0
7	135.0° - 157.5°	91	-2	1
8	157.5° - 180.0°	97	0	1
9	180.0° - 202.5°	91	-1	5
10	202.5° - 225.0°	85	0	8
11	225.0° - 247.5°	85	3	10
12	247.5° - 270.0°	88	5	3
13	270.0° - 292.5°	93	2	-3
14	292.5° - 315.0°	88	4	-5
15	315.0° - 337.5°	85	2	-6
16	337.5° - 360.0°	90	-1	-3

Model:Spotia Zomm CTT negro
 Tester:Sergio Carneros
 Temperature:20Deg
 Manufacturer:Luz Negra

Number:4000K 20° Panal de abeja
 Date:2026-03-23 08:48:38
 Humidity:50%
 Remarks:1 unidad

Spectrum Test Report



Color Parameters:

Chromaticity Coordinate: $x=0.3746$ $y=0.3696$ $u'=0.2241$ $v'=0.4975$
 CCT=4112K (Duv=-0.0017) Dominant WL:Ld =579.7nm Purity=23.3%
 Ratio:R=19.9% G=75.5% B=4.6%; Peak WL:Lp=453.6nm FWHM=24.3nm
 Render Index:Ra=94.8 CRI=92.1 TM30:Rf=91 Rg=99
 R1 =96 R2 =98 R3 =98 R4 =94 R5 =94 R6 =94 R7 =94
 R8 =89 R9 =75 R10=94 R11=95 R12=71 R13=98 R14=98 R15=94

Photo Parameters:

Flux = 1442 lm Eff. : 49.96 lm/W Fe = 5.001 W

Electrical parameters:

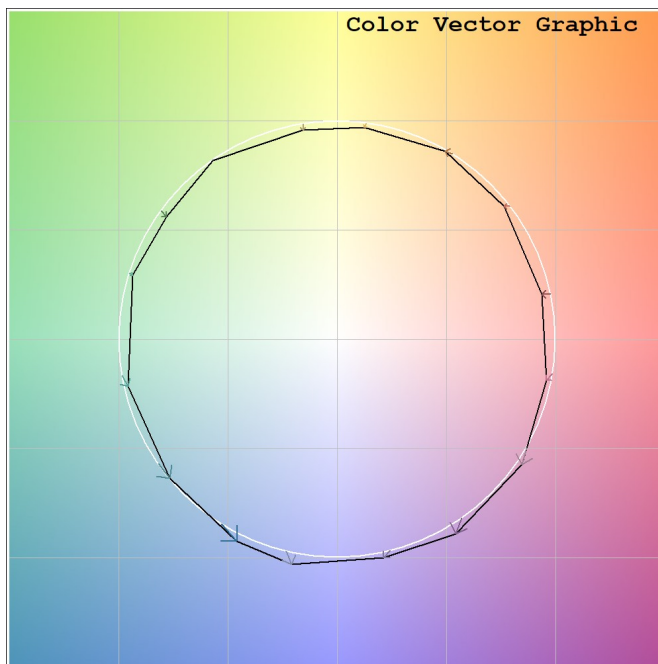
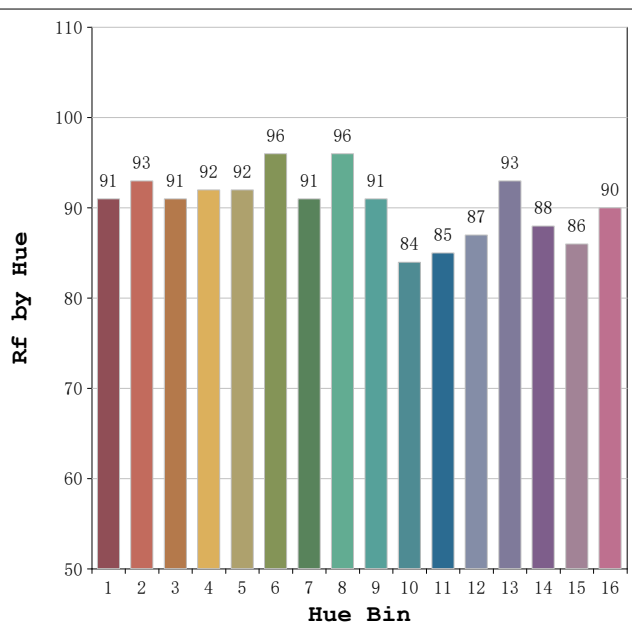
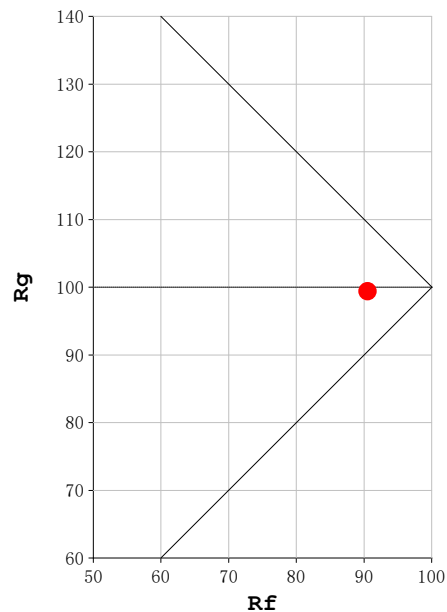
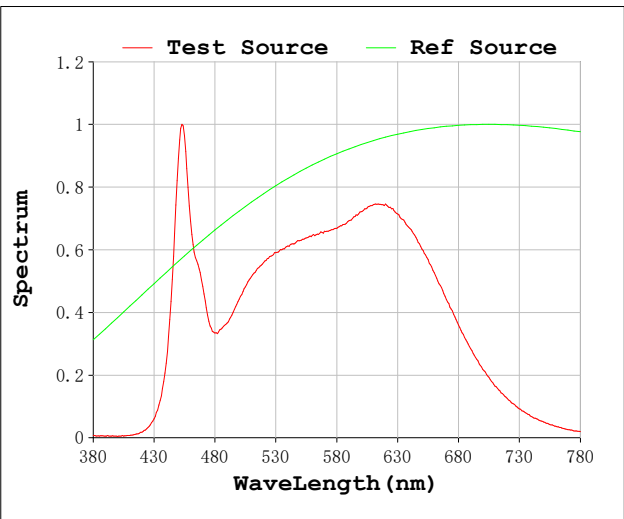
V = 230.07 V I = 0.1317 A P = 28.86 W PF = 0.9525

Status: Integral T = 888 ms Ip = 38025 (58%)

Model:Spotia Zomm CTT negro
 Tester:Sergio Carneros
 Temperature:20Deg
 Manufacturer:Luz Negra

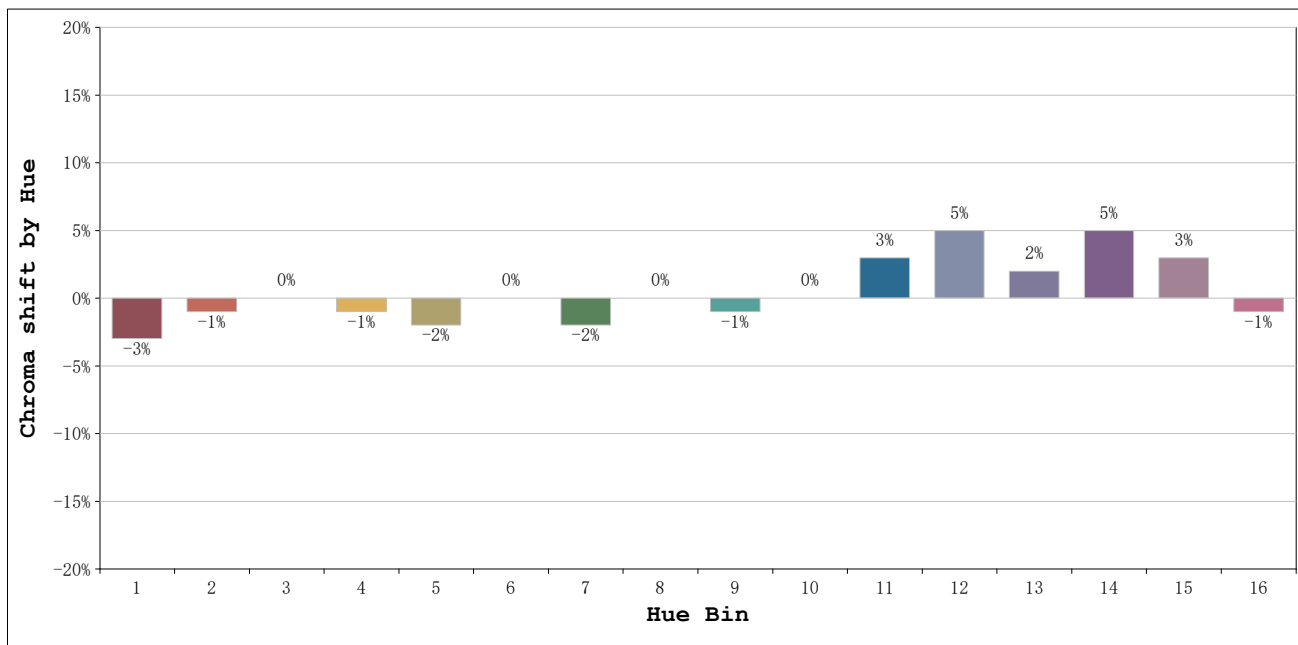
Number:4000K50° Panal de abeja
 Date:2026-03-23 08:49:26
 Humidity:50%
 Remarks:1 unidad

Rf: 91 **CCT: 4112 K** **u': 0.2241**
Rg: 99 **Duv: -0.0017** **v': 0.4975**



Model:Spotia Zomm CTT negro
 Tester:Sergio Carneros
 Temperature:20Deg
 Manufacturer:Luz Negra

Number:4000K50° Panal de abeja
 Date:2026-03-23 08:49:26
 Humidity:50%
 Remarks:1 unidad



			Graphic shift(%)	
Hue Bin	Hue Angle	Rf	Chroma	Hue
1	0.0° - 22.5°	91	-3	1
2	22.5° - 45.0°	93	-1	2
3	45.0° - 67.5°	91	0	3
4	67.5° - 90.0°	92	-1	1
5	90.0° - 112.5°	92	-2	1
6	112.5° - 135.0°	96	0	0
7	135.0° - 157.5°	91	-2	1
8	157.5° - 180.0°	96	0	1
9	180.0° - 202.5°	91	-1	5
10	202.5° - 225.0°	84	0	9
11	225.0° - 247.5°	85	3	10
12	247.5° - 270.0°	87	5	3
13	270.0° - 292.5°	93	2	-3
14	292.5° - 315.0°	88	5	-5
15	315.0° - 337.5°	86	3	-6
16	337.5° - 360.0°	90	-1	-3

Model:Spotia Zomm CTT negro
 Tester:Sergio Carneros
 Temperature:20Deg
 Manufacturer:Luz Negra

Number:4000K50° Panal de abeja
 Date:2026-03-23 08:49:26
 Humidity:50%
 Remarks:1 unidad